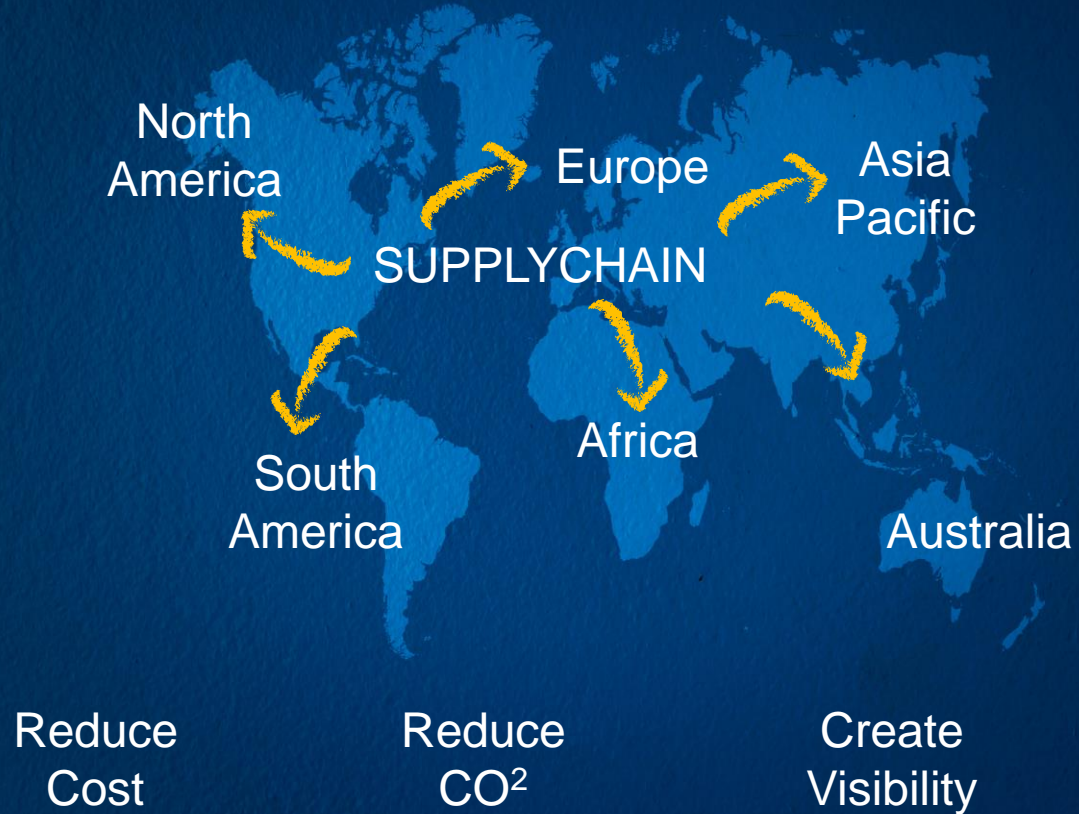


EYEFREIGHT TRANSPORTATION MANAGEMENT

PLAN, OPTIMIZE, DELIVER



TMS IMPLEMENTATION STRATEGY



TRANSPORTATION MANAGEMENT

Where am I ?

Where do I want to be ?

TMS Impact	Level 1 Supplemental	Level 2 Execution Centric	Level 3 Expanded Footprint	Level 4 Advanced Planning	Level 5 Globalization
People	Transportation is a small part of their daily job; low skill.	Limited TMS user knowledge and skills still focus on day-to-day execution.	Increasing TMS user knowledge and skills still focus on improving management of transportation through more capabilities (track).	Advanced TMS user knowledge and skills focus on optimizing transportation activities.	Advanced TMS user knowledge and skills focus specifically around international shipping and transportation in global markets.
Process	Primarily manual processes with minimal use of technology (ERP); very low complexity.	Minimal complexity, typically single mode; minimal opportunity to consolidate shipments; focus on carrier tendering.	Growing complexity, multimodal, still minimal shipment consolidation; focus on improving transportation operational performance.	High complexity, multimodal, need shipment consolidation; focus on reducing transportation costs through freight optimization.	Very high complexity, multimodal, multileg international shipments, support additional models (such as ocean); focus on complexities of planning and executing international shipments.
Technology	Use whatever capabilities provided by ERP, or perform manually.	Strong carrier connectivity with rudimentary ERP, SaaS TMS or Simple TMS.	Broader and more functional deep ERP, SaaS TMS or best-of-breed TMS.	TMS with strong multimodal advanced planning and optimization.	Support global needs such as language, currency, and rules, plus specific capabilities for multileg international shipping.

Source: Gartner (January 2008)

